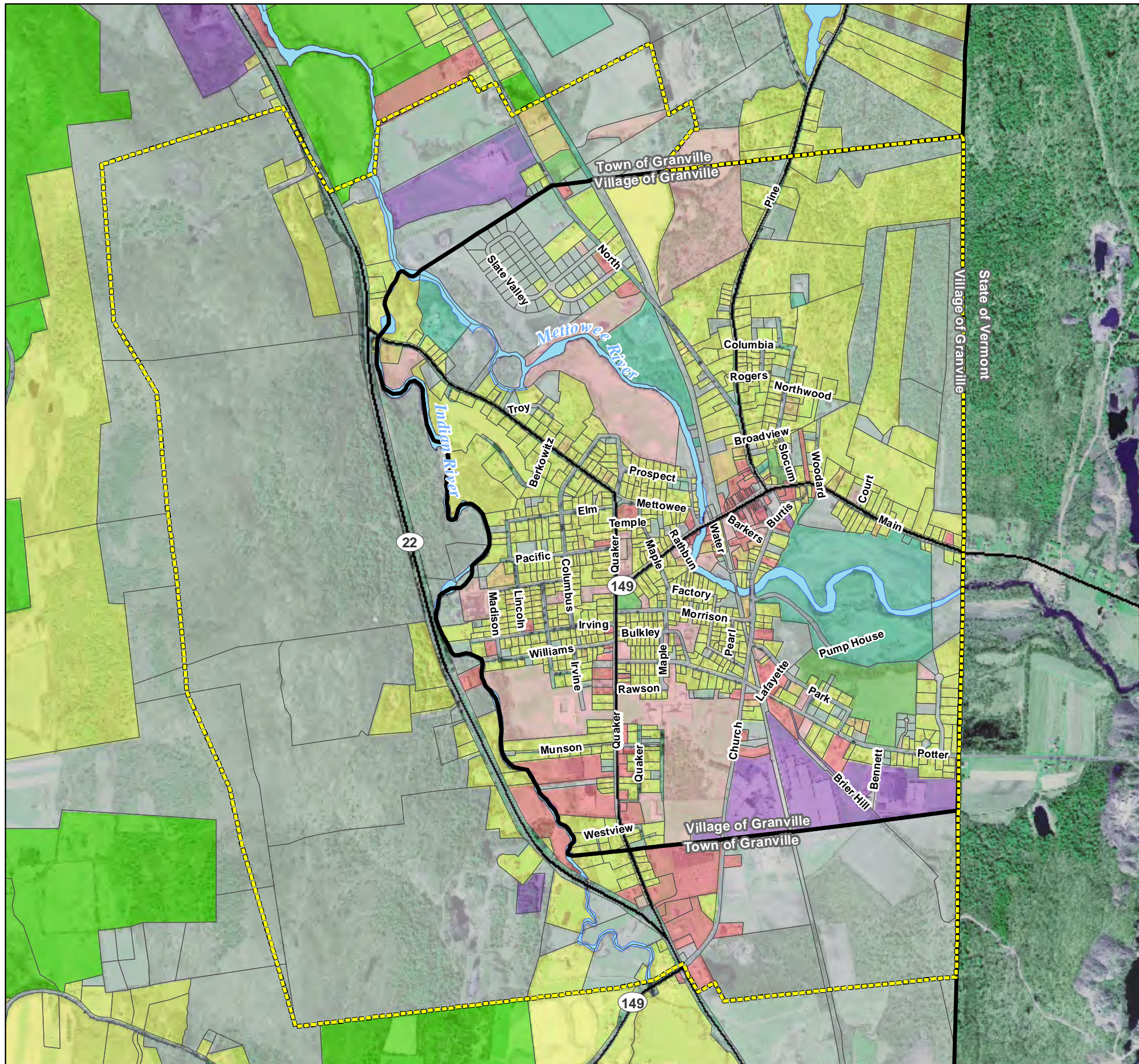


# METTOWEE RIVER REVITALIZATION STRATEGY

## Land Use Map



### Legend

- project\_area
- Town Boundary**
- Town Boundary
- Parcels
- Waterbodies
- Land Use**
- Agriculture
- Single- and Two-Family Residential
- Vacant
- Commercial
- Multi-Family Residential
- Recreation
- Community Service
- Industrial
- Public Services
- Wild, Forested, and Conservation
- Major Roads

### VILLAGE OF GRANVILLE

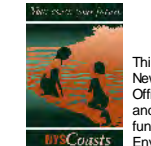
Map Date:  
2/16/2010



500 250 0 500 Feet



Prepared for:



This project was prepared for the New York State Department of State Office of Coastal, Local Government and Community Sustainability with funds provided under Title 11 of the Environmental Protection Fund.

Prepared by:

